

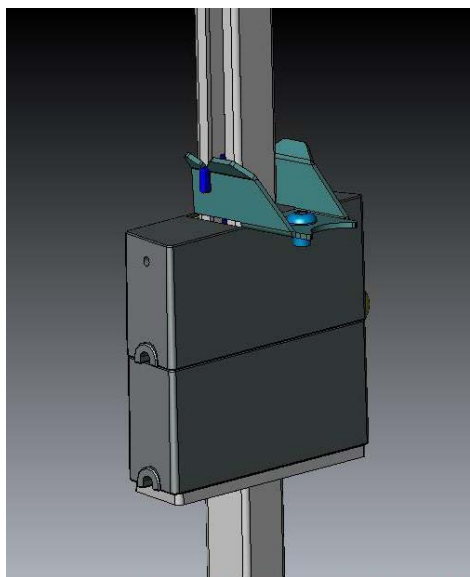
## Nitro/Nitro+ Add-on Weights

### Nitro (S3) & Nitro+ (S5), all units

This document explains all the options for add-on weights, parts & changes to the Nitro units for all years and units.

### Change History

The Nitro/Nitro+ line of machines went through an engineering revision in 2008 which among other components had some major changes to the add-on weight stack and associated parts.



Units manufactured prior to 2008 had a shorter connecting bracket and a plastic add-on center pin. The plastic center pin is no longer available. The pre-2008 units also used a longer pin (5.5" long, #N07-8048) to go through the longer add-on weight plates (pin not shown).

**Note: The N07-8048 weight selection pins are still available for ordering and still must be used even if they convert to the new center pin bracket due to the longer weights.**

In the event of damage where a weight plate needs to be replaced, the unit will need to be converted to a newer stack (see page 2). All other parts are still available. See parts list below. Please note that the weight stack tethers (coils) are not included with the pins and must be ordered separately.

Coil screws and washers are uncommonly needed but included in the list.

### Parts list relevant to pre-2008 units only:

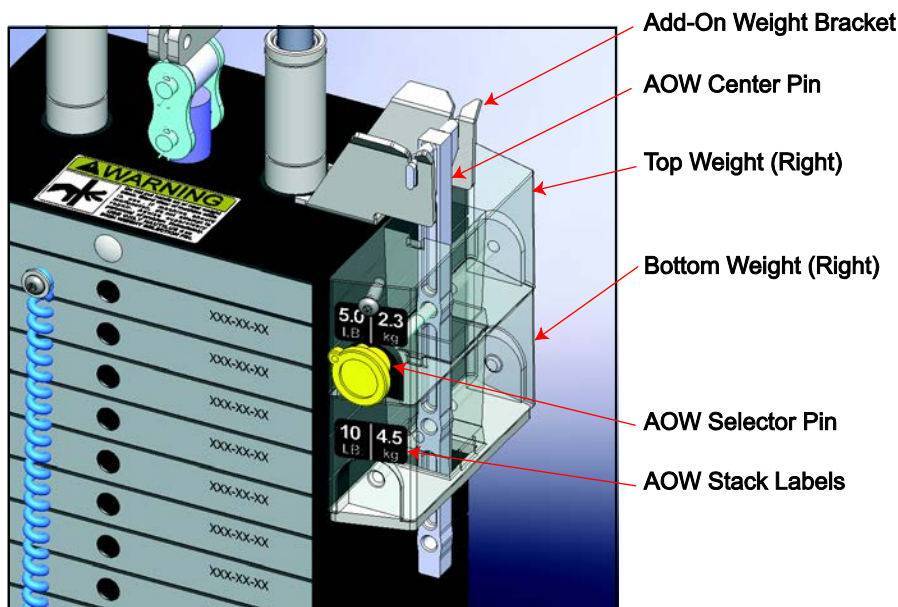
N07-8298	Primary Weight Stack Pin
N06-7064	Primary Weight Stack Coil
N07-8048	Secondary Weight Stack Pin 5.5"
N06-7061	Secondary Weight Stack Coil
N02-9190	Weight Stack Coil Attachment Screw
N04-2015	Weight Stack Coil Attachment Washer
N09-9032	Add-on Weight Center Pin
N07-9508	Add-on Weight Bracket - 1.5" Tall
N12-1301	Add-On Weight Stickers

## Current Revisions

Add-on weight stacks for all current Nitro units come in three types:

- Add-on Stack – Right Hand <sup>1</sup>
- Add-on Stack – Left Hand <sup>2</sup>
- Add-on Stack – Leg Press Only <sup>3</sup>

Refer to the diagrams in the footnotes for the part numbers for replacement weights. Regardless of position, all add-on weight stacks use the same configuration of components as shown. The same center pin and selection pins are used for all types.



**Nitro/Nitro+ Add-On Weight Detail**  
Some components removed or made transparent for clarity

Units that were manufactured prior to 2008 and have been converted to the new style weights & bracket may still need the shorter bracket N07-9508, measure prior to ordering. If the center pin aligns with the selector pin on the old bracket, it is still needed.

### Parts list – common to all units:

N07-8298	Primary Weight Stack Pin
N06-7064	Primary Weight Stack Coil
56-0012	Secondary Weight Stack Pin 3"
N06-7061	Secondary Weight Stack Coil
N02-9190	Weight Stack Coil Attachment Screw
N04-2015	Weight Stack Coil Attachment Washer
N09-9032	Add-on Weight Center Pin
N07-9509	Add-on Weight Bracket - 2.3" Tall
N12-1301	Add-On Weight Stickers

<sup>1</sup> Diagram at <https://support.nautilusstrength.com/brands/nautilus/Drawings/KIT-S5-AOW-RT.PDF>

<sup>2</sup> Diagram at <https://support.nautilusstrength.com/brands/nautilus/Drawings/KIT-S5-AOW-LEFT.PDF>

<sup>3</sup> Diagram at <https://support.nautilusstrength.com/brands/nautilus/Drawings/KIT-S5-AOW-S5LP.PDF>

## Reference

All versions of weight stack pins shown below, for all units, all years:

